

The logo for the Society for Clinical Trials (SCT) is centered in the background. It consists of a large, semi-transparent globe with a grid of latitude and longitude lines. In front of the globe, there is a faint, semi-transparent image of a group of people standing together, representing a clinical trial cohort. The entire logo is set against a solid blue background with a subtle gradient and some abstract, curved lines in lighter shades of blue and green.

SCT

SOCIETY FOR CLINICAL TRIALS

PCORnet® Webinar Series Part 1: PCORnet® 101

Moderator: Larisa Tereshchenko

Presenters: Michael Mead, Kim Marschhauser, & Claudia Grossmann

Today's Faculty



Michael Mead, PhD

PCORI



Kim Marschhauser, PhD

PCORI



Claudia Grossmann, PhD

PCORI

On Today's Webinar

- Our presenters will cover:
 - Description of PCORnet® Infrastructure
 - PCORnet® Common Data Model
 - Information on How to Work with PCORnet®
 - Demonstration of Relevant Use Cases
 - Panel Discussion/Q&A

Before We Begin Our Presentations...

- We will hold a Q&A session after today's presentations.
- We encourage all webinar attendees to submit questions via the Question Box.
- If we don't get to your questions today, we will follow up with you after the webinar via email.
- Today's webinar is being recorded and will be available to SCT members in the Members-Only Area of the SCT website.

PCORnet[®] Webinar Series Part 1: PCORnet[®] 101

Research, Data, and Technology
Research Infrastructure & Innovation
PCORI



- PCORnet[®] Overview
- Using PCORnet[®]
- Case Studies
- PCORI Funding Opportunities

PCORnet® Contributes to PCORI's Mission and National Priorities for Health



PCORnet®

- Supports national-scale studies designed to help people make better informed healthcare decisions
- Catalyst for *Research Done Differently*
 - Embeds patient partnership and community engagement in all components of the network
 - Enhances capacity to conduct health research with real world data
 - Builds reusable infrastructure and capacity for continuous improvement at local, regional, and national levels



PCORnet® is Unique Among Large, Established Health Research Networks

To PCORI's knowledge, PCORnet is the only large, established health research network to include all of the following features:

Queries to Inform Study Feasibility and Design

Patient Populations for Trial Recruitment



pcornet®

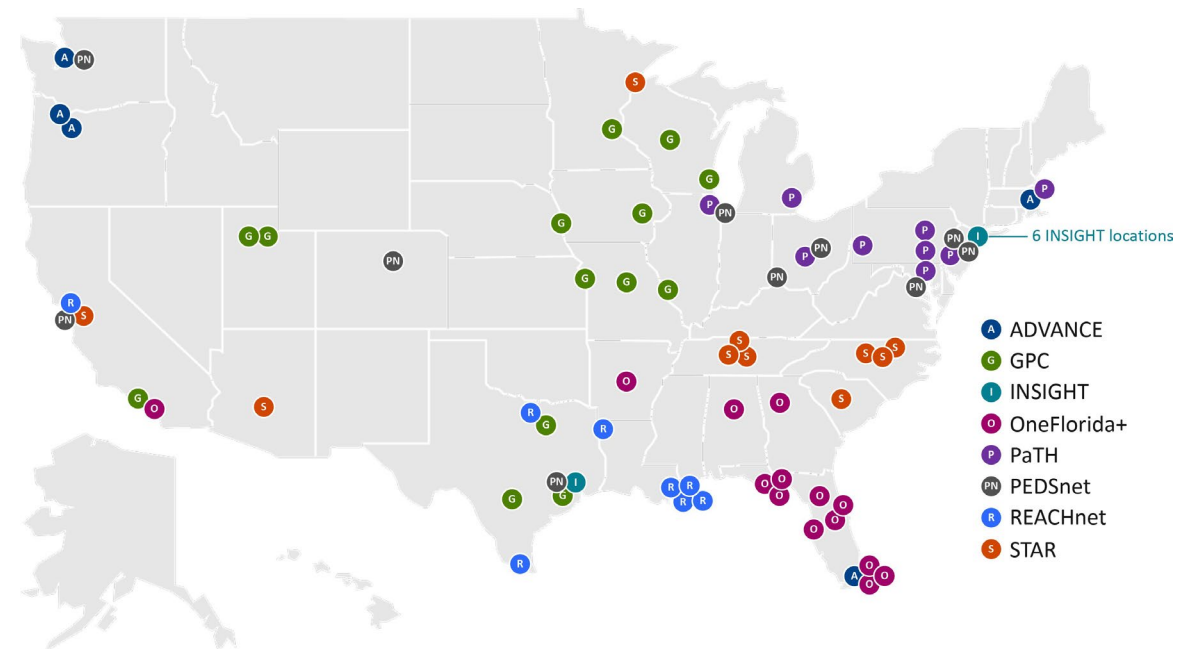
The National Patient-Centered Clinical Research Network

Coordinated Data Curation

Data Linkable to Patients and Providers, in Accordance with Applicable Federal and State Laws

PCORnet® Clinical Research Network Locations

- PCORnet infrastructure offers access to real-world data through partnerships with Clinical Research Networks (CRNs)
- CRNs are groups of diverse healthcare institutions across the U.S., from large academic health centers to local community clinics, united by a commitment to speed patient-centered research via PCORnet



PCORnet® Clinical Research Network Sites

(as of August 2023)



1. Fenway Health
2. Health Choice Network
3. OCHIN
4. Oregon Health & Science University Hospital System*
5. The University of Washington*



6. Allina Health
7. Intermountain Healthcare
8. Marshfield Clinic Research Institute
9. Medical College of Wisconsin
10. University of California, Los Angeles*
11. University of Iowa Healthcare
12. University of Kansas Hospital
13. University of Missouri
14. University of Nebraska Medical Center
15. University of Texas Health Science Center at Houston
16. University of Utah Health
17. UT Health San Antonio
18. UT Southwestern Medical Center
19. Washington University in St. Louis



20. Columbia
21. Houston Methodist*
22. Montefiore
23. Mount Sinai
24. New York University Langone Health
25. New York-Presbyterian
26. Weill Cornell Medicine



27. AdventHealth Orlando
28. Bond Community Health Center, Inc.
29. Emory University
30. Florida Medicaid
31. Jackson Health System*
32. Nicklaus Children's Hospital (NCH)
33. Orlando Health
34. Tallahassee Memorial Healthcare and Capital Health Plan
35. University of Alabama at Birmingham
36. University of Arkansas for Medical Sciences*
37. University of California, Irvine*
38. University of Florida and University of Florida Health
39. University of Miami and UHealth
40. University of South Florida and Tampa General Hospital
41. Boston Medical Center*
42. Geisinger Health
43. Johns Hopkins University
44. Ohio State University
45. Penn State University
46. Rush University Medical Center*
47. Temple University
48. University of Michigan
49. University of Pittsburgh



50. Children's National Hospital*
51. Cincinnati Children's Hospital
52. Colorado Children's Hospital
53. Lurie Children's Hospital
54. Nationwide Children's Hospital
55. Nemours
56. Seattle Children's Research Institute
57. Stanford Children's Health
58. Texas Children's Hospital*
59. The Children's Hospital of Philadelphia



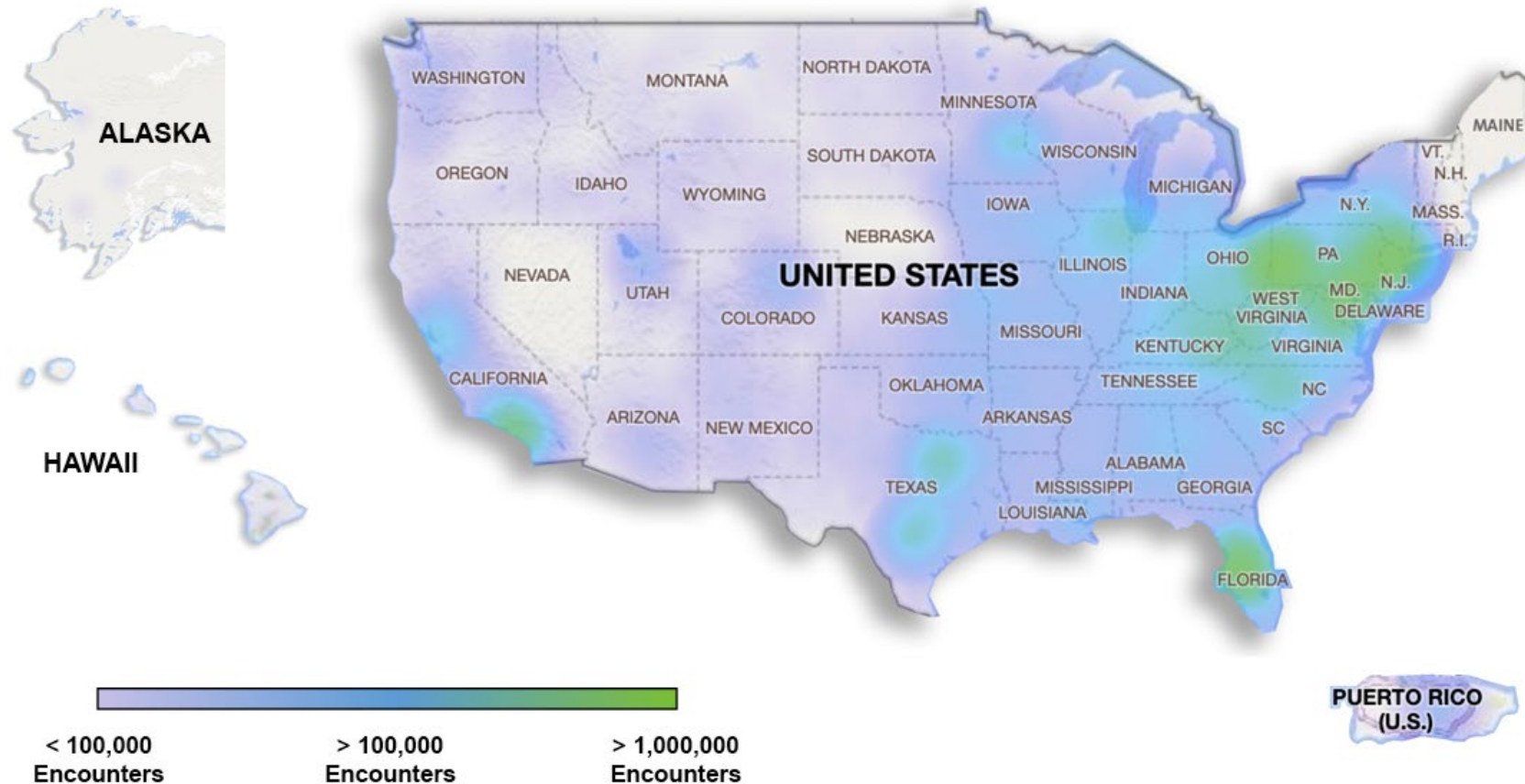
60. Baylor Scott & White Health (BSWH)
61. DHR Health Inst. for Research and Development*
62. Louisiana Public Health Institute (Lead)
63. Ochsner Health
64. Ochsner LSU Health Shreveport*
65. Tulane Medical Center
66. University Medical Center New Orleans
67. University of California, San Francisco*
68. Duke University
69. Essentia Health*
70. Health Sciences South Carolina
71. Mayo Clinic
72. Meharry Medical College
73. Stanford Healthcare*
74. University of North Carolina at Chapel Hill
75. Vanderbilt Health Affiliated Network
76. Vanderbilt University Medical Center
77. Wake Forest University Health Sciences

1. The Children's Hospital of Philadelphia
2. Vanderbilt University Medical Center
3. Duke University

*New CRN sites

Scope of Data Accessible Through PCORnet®

PCORnet represents data from everyday health care encounters with more than 47 million people across the U.S. each year.



The Coordinating Center for PCORnet® serves as a central hub bringing the 8 diverse Clinical Research Networks and their participating institutions and patient partners together through shared communications, meetings, and initiatives.

Governance and Research Readiness

- Facilitates PCORnet governance, collaboration, and operations to enable PCORnet® Studies
- Manages PCORnet® Front Door

Data

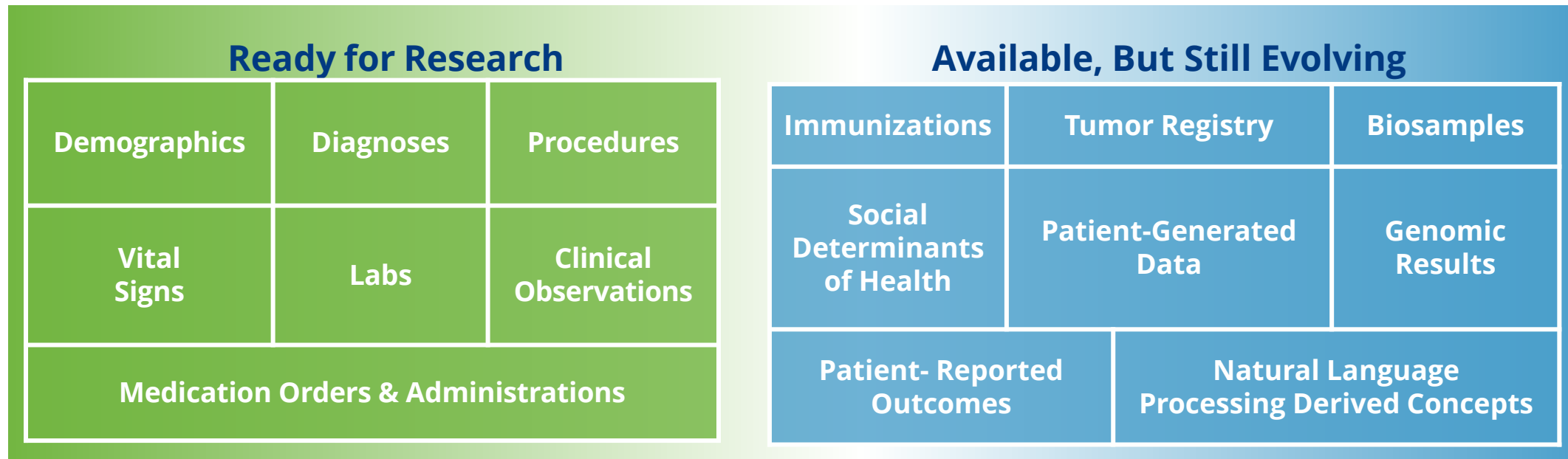
- Maintenance and development of the PCORnet Common Data Model, data characterization, and privacy preserving record linkage
- Supports study consultation and query and analytic tool development to enable PCORnet® Studies

Engagement and Public Awareness

- Supports communications (e.g., website, social media, newsletter) to continue building awareness that expands the use of PCORnet resources
- Supports the broad range of PCORnet stakeholders to fully participate in PCORnet activities, including PCORnet governance
- Facilitates peer learning and dissemination of tools and resources to support engagement across PCORnet

The PCORnet[®] Common Data Model

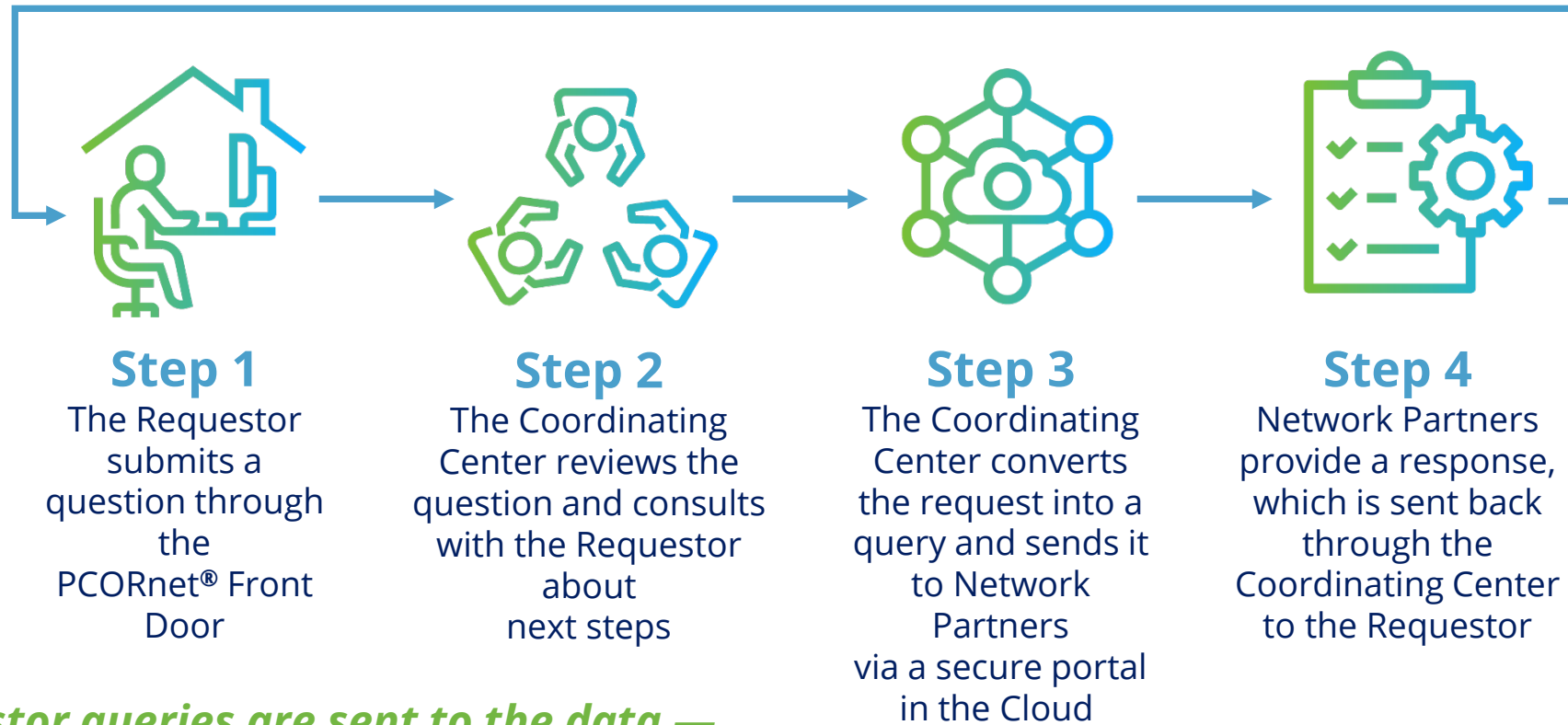
For data to be useful, it has to be standardized across systems. Frequent data curation and a single language enabled by the PCORnet[®] Common Data Model delivers fast insights.



Data available from Clinical Research Networks, in the PCORnet[®] Common Data Model and ready for use in research

Data available at some Clinical Research Networks, may or may not be in the PCORnet[®] Common Data Model and require additional work for use in research

A Secure Infrastructure Makes Real-World Data Accessible



Requestor queries are sent to the data — and answers, not data, are sent back to requestors.

[Read the PCORnet® Privacy Statement](#)

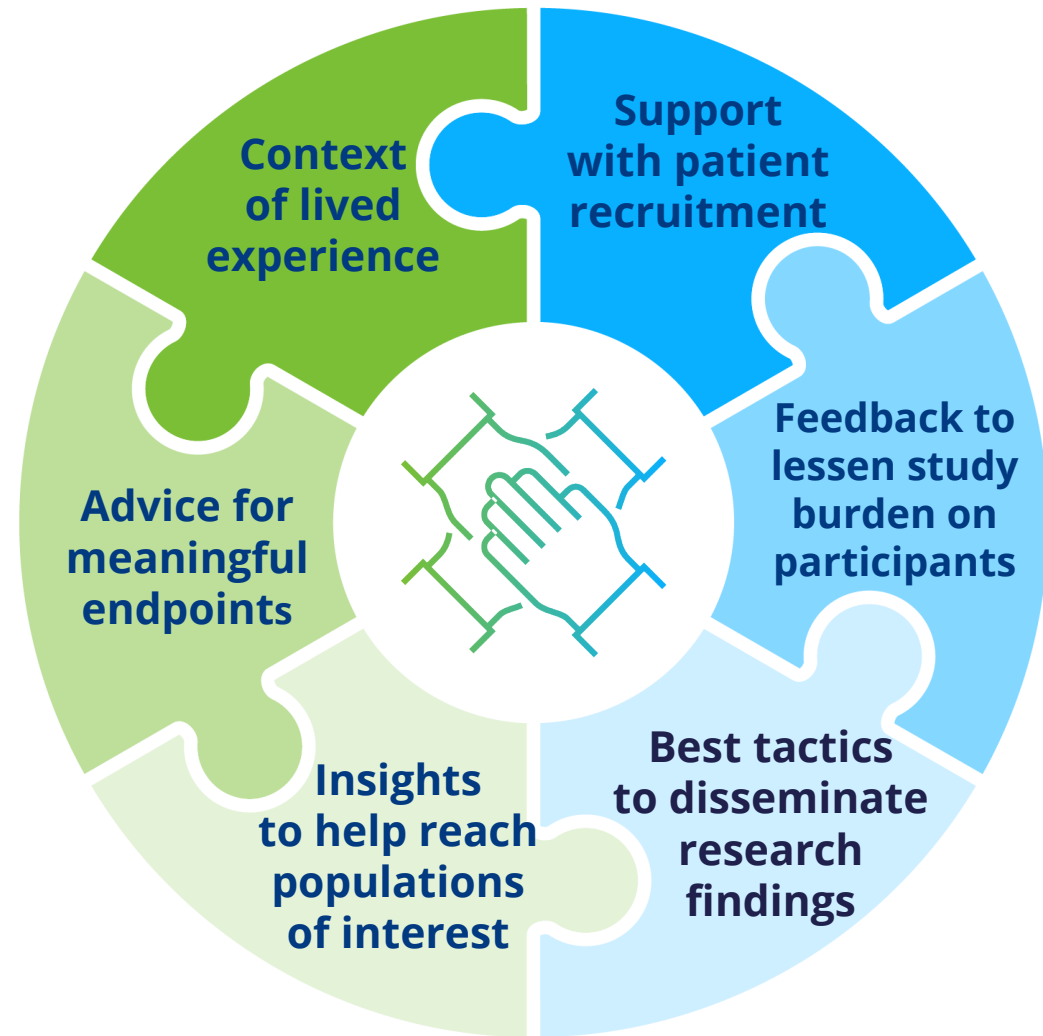
Engaged Communities Drive Better Research

“Good studies consider all relevant evidence – and no evidence is more relevant than the community experience.”

– PCORnet® Steering Committee Member

What does “communities” mean in this context?

- **Patients and caregivers**, who have a seat at the table of every PCORnet® Study, engaging as coequal collaborators with health professionals
- **Clinicians/Clinic Staff**
- **Insurers**
- **Policymakers**
- **Others**



The Front Door is the Access Point for PCORnet Resources & Services

A “knock” on the Front Door can also support:

Study Design

- Preliminary data for proposals, effect sizes and potential study power

Connections to Network Collaborators

- Partners to co-design research
- People with specific expertise

PCORnet Study Designation Support

- Deeper partnership with PCORnet provides access to best practice sharing, patient engagement, and transparent quality improvement initiatives



The screenshot shows the PCORnet website's "Front Door" page. At the top, there is a navigation bar with links for "About", "Governance", "Resources", and "Newsroom". Below this is the PCORnet logo and a secondary navigation bar with links for "NETWORK", "RESEARCH", "DATA", "ENGAGEMENT", and "FRONT DOOR". The main content area features a large blue banner with a door icon and the text: "How do you partner with PCORnet? PCORnet is a national resource available to everyone." Below the banner, there is a paragraph of text: "The Front Door is an access point for potential investigators, patient groups, healthcare organizations, clinicians and clinician groups, government, industry scientists, sponsors, and all stakeholders seeking to leverage PCORnet infrastructure and collaborate on patient-centered research." A button labeled "CONTACT THE FRONT DOOR" is positioned below the text. To the right, there is a video player with the title "Knock on the Front Door to Begin Collaborating with PCORnet" and a video player interface showing a play button and a 02:41 duration.

[Learn More About the Front Door](#)

What Are PCORnet® Studies?



- PCORnet® Studies meet a higher bar for PCORnet involvement and exemplify the type of national-scale patient-centered research PCORI envisioned when developing the network. These studies:
 - Include 2 or more Clinical Research Networks (CRNs)
 - Share study progress, performance metrics (e.g., Days to IRB, Number of days to first patient enrolled) monthly
 - Share best practices at least annually with the Network (e.g., PCORnet® Steering Committee), as outlined in additional PCORnet® Study milestones
 - Use PCORnet resources to improve the efficiency of the patient-centered research conducted (e.g., PCORnet® Common Data Model, single IRB, engagement resources)
- Note: Only PCORnet® Studies have permission to use the PCORnet name and logo ([PCORnet Branding Guidelines](#))

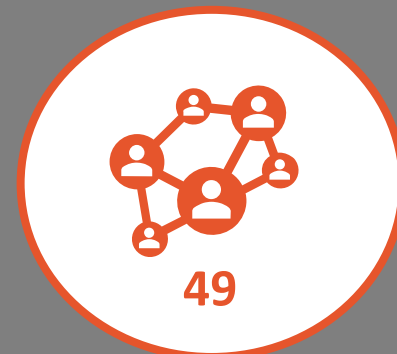
PCORnet[®] is Accelerating National-Scale Patient-Centered CER and other Health Research



Annual Patients with Encounters



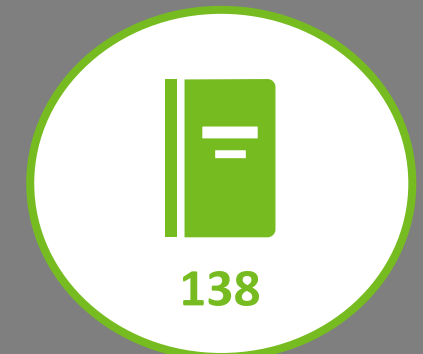
Clinical Care Sites



National Scale PCORnet[®] Studies



PCORnet[®] Study Funding



PCORnet[®] Study Publications

PCORnet[®] Compared with Other Research Networks



PCORnet infrastructure brings a full spectrum of capabilities, plus connection to communities

	Feasibility queries	Identify patient populations for trial recruitment	Coordinated data curation	Connection to patients and providers
PCORnet	●	●	●	●
ENACT	●	●	●	●
TriNetX	●	●	●	●
OPTUM	●	●	●	●
OHDSI	●	●	●	●
Sentinel	●	●	●	●

● = Capabilities ● = Limited capabilities ● = Lacks capability

Case Studies



ACTIV-6

Impact of the Accelerating COVID-19 Therapeutic Interventions and Medicines (ACTIV) Partnership



Question:

Can medications already approved by the FDA for other conditions improve recovery time for people with mild-to-moderate COVID-19?

Findings to date:

Early treatment with Fluticasone, Ivermectin, or Fluvoxamine improved time to recovery for outpatients with COVID-19 in the US.

ACTIV-6 ORnet®:

Decentralized: On-line enrollment, consenting, and randomization; study medication shipped to participants' homes; all data collection through online/phone surveys

Implementation resources: Leveraging patient and clinician engagement infrastructure to provide study guidance through a stakeholder advisory board

Large national-scale recruitment: National reach of study sites, including

Study Snapshot

- Decentralized, platform randomized clinical trial
- Patients ≥ 30 yr with mild/moderate COVID-19
- Medications tested:
 - Ivermectin
 - Fluvoxamine
 - Fluticasone
 - Montelukast (still open)
- NIH funded

How does the study work?



Learn about ACTIV-6 online, on the radio, or from health systems, pharmacies, testing centers, or community partners.



Test positive for COVID-19.



Enroll online or over the phone. activ6study.org



Receive assigned study medication and directions at home. Take the study medication as directed.



Complete surveys about how you feel online or over the phone.

What makes ACTIV-6 different?



ACTIV-6 is testing several medications that are approved to treat conditions other than COVID-19 and can be found at your local pharmacy.

This provides options to participants and helps speed to results faster.



Participate from home — study medication is mailed directly to participants who can sign up and complete surveys online or over the phone.

PRECEDENT

Prevention of Cardiovascular and Diabetic kidney disease in adults with Type 2 Diabetes



Question:

Medication treatment is most effective at reducing major health events, such as heart attack, stroke, kidney disease, and death in adults with type 2 diabetes and heart disease or high heart disease risk.

Key findings to date:

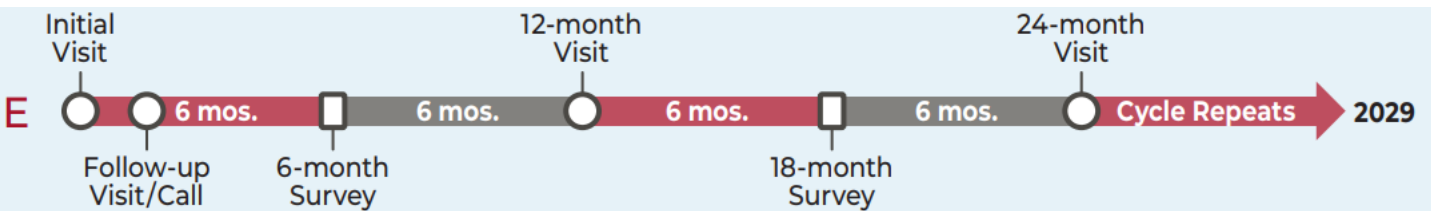
Continuing.

Study Snapshot

- Patient-level randomized, open-label, pragmatic, comparative effectiveness trial
- 9,000 adults with type 2 diabetes and atherosclerotic cardiovascular disease
- Medications tested:
 - SGLT2i
 - GLP-1 RA
 - Combination

Use of PCORnet® :

- *Recruitment: participants enrolled in partnership with 20-30 PCORnet healthcare systems across the US.*
- *Outcome data: medical outcomes captured through queries of the electronic health records at PCORnet affiliated sites using the PCORI common data model.*
- *Engagement: engaged local patient stakeholders and received feedback from patients as well as PCORnet investigators on project design and outcomes*



PCORI Funding Opportunities



5 Research Award Funding Opportunities



Up to \$22M
Feasibility and
scale study
phases

Phased Large Awards for Comparative Effectiveness Research
Large, meritorious and innovative studies with some risks

Up to \$5M
\$5-12M
Up to \$12M

Broad Pragmatic Studies
Investigator-initiated awards in alignment with the National Priorities for Health
(Three funding categories, including PCORnet® studies)

Up to \$750K

Methods
Improve use of AI and ML, improve study design, support data
research networks, ethical and human subject protections in CER

Up to \$1M
Up to \$1.5M

Science of Engagement
Two funding categories: Development and validation of measures
Development and testing of engagement techniques

Variable

Focused
Stakeholder-driven topics, issues and questions of national significance

**Funding Cycle
LOI Deadlines**
Cycle 1: Jan. 14
Cycle 2: May 13
Cycle 3: Sept. 23

Category 3 for PCORnet® Studies



Cycle 2 of 2023, Category 3 was added to the Broad Pragmatic Studies (BPS) PCORI Funding Announcement (PFA) to support PCORnet® Studies that advance PCORI's National Priorities for Health

Studies must:

- Address PCORI's National Priorities for Health

- Include 2 or more Clinical Research Networks (CRNs)

- Share study progress, performance metrics (e.g., Days to IRB, Number of days to first patient enrolled) monthly

- Share best practices at least annually with the Network (e.g., PCORnet® Steering Committee), as outlined in additional PCORnet® Study milestones

- Use PCORnet resources to improve the efficiency of the patient-centered research conducted (e.g., PCORnet® Common Data Model, single IRB, engagement resources)

Project Budget and Duration for 2023 BPS PFA: Categories 1, 2 & 3



award sizes with varying requirements/limitations allowed across all four
National Priority Areas for Health

Category 1: Total direct costs \leq \$5 million

Category 2: \$5 million $<$ Total direct costs \leq \$12 million

Category 3: Total direct costs \leq \$12 million

Applicants seeking budgets greater than \$5M, must provide brief additional
information to:

Justify the large size and scope of their proposed research

Describe how additional funds are necessary with respect to the scale, scope, and
complexity of personnel and material resources needed

Subject to additional merit review considerations

Category 3 Requirements



Applicants to Category 3 must contact the PCORnet® Front Door before LOI submission.

Please include your Front Door number (FD#XXX) in your LOI

With the full application, applicants must submit Letters of Support from at least two CRN sites that have agreed to participate.

Category 3 PCORnet® Studies will include additional milestones that specify:

Share study progress and best practices regularly with the network, such as through annual presentations to the PCORnet® Steering Committee,

Report performance on study site metrics (e.g., time to IRB, enrollment rates) monthly to the Coordinating Center for PCORnet to promote continuous learning and improvement.

Can Category 1 and 2 applicants use PCORnet®?

Category 1 and 2 applicants can still use PCORnet if they do not meet the requirements for Category 3

How will PCORI verify that Category 3 applicants have contacted the PCORnet® Front Door?

Applicants will be required to include a Front Door number in the submitted LOI for a Category 3 study. This number is provided as part of the Front Door consultation.

How should Category 3 applicants obtain Letters of Support from PCORnet® Clinical Research Network sites?

PCORnet® Front Door (<https://pcornet.org/front-door/>) can assist applicants in identifying potential collaborators. Applicants can also reach out to investigators associated with PCORnet sites directly. A complete list of all PCORnet participating sites is available at <https://pcornet.org/network/>.

Must all Category 3 submissions include use of the PCORnet® Common Data Model?

Category 3 submissions must include the use of the PCORnet resources to improve the efficiency of the patient-centered research conducted (e.g., PCORnet® Common Data Model, single IRB, engagement resources). This can

Additional PCORnet® Workshop



Next PCORnet Webinar Part 2 (Date TBD)

will be presented by members of the Coordinating Center for PCORnet® and will build upon part 1

Will include:

- Ways that PCORnet supports research
- Deeper dive into the PCORnet® Common Data Model
- Resources for stakeholder engagement

nk you

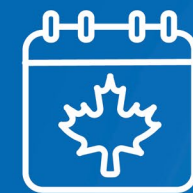


Q&A

46th
ANNUAL
MEETING

May 18-21, 2025

VANCOUVER
CANADA



SAVE
THE
DATE



SCT

SCT Membership Benefits

Here are some of the many benefits you receive as a member of SCT:

Networking

Continuing Education

Webinars

Subscription to the *Clinical Trials* Journal

Substantially discounted registration fees to SCT Annual Meetings

Professional development, leadership, and presentation opportunities

Social outreach and communication

<https://sctweb.org/membership.cfm>

Interested in presenting a future SCT Webinar?

On the SCT website, click on the Member Sign-In button and login.

On the Members-Only Area Home page, click on “Propose a SCT Webinar!” in the menu on the righthand side.

Complete and return the Webinar Proposal Form to contact@sctweb.org for the SCT Education Committee’s review and consideration.

Have you completed your SCT member profile?

SCT leadership is making a concerted effort to learn more about our membership community in an effort to develop more appropriate programs and services, increase engagement, and ensure members' voices are heard regarding priorities in clinical trials research and education. As such, we ask that you please complete your member profile.

To complete your SCT member profile, please follow the steps below:

1. Log onto the Members-Only Area of the SCT website.

2. Click on the "Your Membership Account" option in the right-hand side menu.

3. Complete the optional questions on the "Profile" tab.

Thank You!